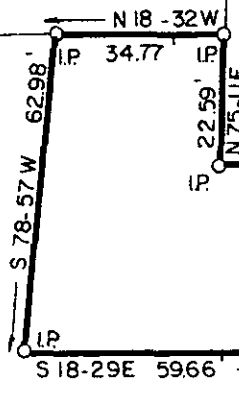
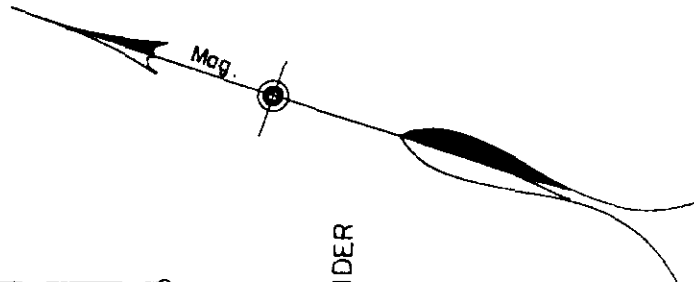


50' STREET

VIRGINIA P. ALEXANDER

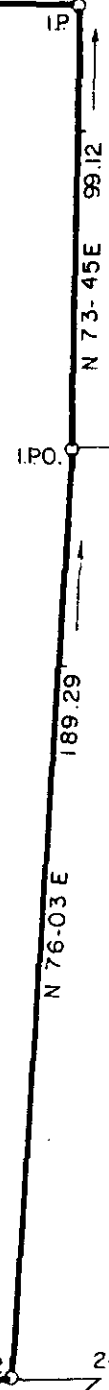
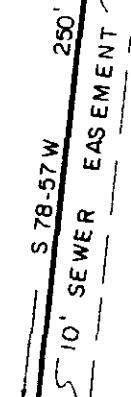


N 18-29 W 222.77'

VIRGINIA P. ALEXANDER

LAND LEASE NATIONAL CORP

AREA = 1.461 ACRES
or 63,641 SQ. FT.



W S. ALEXANDER

JENKINS STREET

10' SEWER R/W

S 18-34 E 218.1'

U. S. HIGHWAY 276

PROPERTY OF
EAI MAULDIN PARTNERS
GREENVILLE COUNTY, S.C.

FILED
GREENVILLE CO. S.C.
MAY 9 10 58 AM '86
DANNIE S. TANKERSLEY
R.M.C.

Scale 1" = 40' April, 1986

DALTON & NEVES CO., INC. ENGINEERS

121 MANLY STREET

GREENVILLE, S.C.

37071
MAY 9 1986

12-R-44

